



■ Some of the photos may include optional equipment.

FORKLIFT TRUCKS **Environmentally - Friendly**

# 10/13/14/15/18BR-7 AC 20/25BR-7 AC

**HYUNDAI**  
HEAVY INDUSTRIES CO.,LTD.  
**FORKLIFT**

Head Office (Sales Office)  
14th FL., HYUNDAI BLDG. 140-2, KYE-DONG, JONGNO-GU, SEOUL, KOREA 110-793  
TEL: (82) (2) 746-4505, 4609 FAX: (82) (2) 746-7444-7445  
Americas Operation: Hyundai Construction Equipment Americas, Inc.  
6100 ATLANTIC BOULEVARD NORCROSS GA 30071 U.S.A TEL: (1)847-678-823-7802 FAX: (1)847-678-823-7778  
Europe Operation: Hyundai Heavy Industries Europe N.V.  
VOSSENDAAL 11, 2440 GEEL, BELGIUM TEL: (32) 14-56-2200 FAX: (32) 14-59-3405



PLEASE CONTACT

[www.hyundai-ce.com](http://www.hyundai-ce.com)

2013. 01 Rev.5

**HYUNDAI**  
HEAVY INDUSTRIES CO.,LTD.

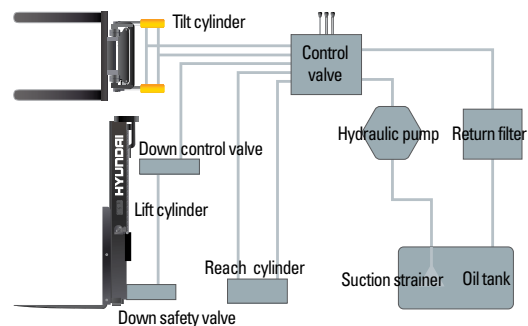
## Superior Power & Optimal Performance

Smooth running, efficiently and ergonomically designed, 10/13/14/15/18/20/25BR-7 series are built to meet your needs.



### Excellent Gradeability Operation

A powerful drive motor and four wheel configuration provide for exceptional stability and excellent gradeability.



### State-of-the-art Hydraulic System

The latest large-capacity hydraulic system reacts quickly during operation and the low noise control valve increases both efficiency and durability.



### Minimum Turning Radius

Compact design suitable for narrow aisle operation guarantees work efficiency and maximum space utilization.



■ Some of the photos may include optional equipment.



### Electric Power Steering(EPS)

EPS assures effortless steering allowing less fatigue to the operator. Machine performance and battery life are also enhanced.



### Accelerator

The accelerator control provides the operator with precise and smooth directional control.



### Versatile Reach Stroke

Multi-roller reach assembly provides a smooth, controlled and safe load handling system. Extended reach allows unsurpassed versatility.



### Anti Roll Back

When restarting after stop on a slope, an anti-roll back function ensure operational safety.

### High Technology ZAPI Controller

The efficient, almost noiseless, 8Khz(high frequency) ZAPI controller provides smooth quiet operation and protection for low & high voltage, overheating and fault recording.



### Drive Motor & Pump Motor

Efficient Schabmueller AC motor guarantees reliability and a optimized motor design provides low noise levels. Temperature sensor ensures long motor life.





■ Some of the photos may include optional equipment.

## Comfortable Operation

A design based on human engineering relieves fatigue and increases operator's efficiency.



### Newly Designed Steer Control Handle

A newly designed steering control coupled with our new Electric Power Steering control gives the operator exceptionally smooth and controlled steering for tight spaces.



### New High Visibility for Safe Operation

The operator is able to work with increased safety and accuracy due to a wider mast view.



### User Friendly Hydraulic Control

Minimal operator effort is required for precise, safe and productive control. As a standard layout is used, the operator learning curve is lessened.



### Perfect Fit For Busy Operations

An ergonomically designed operator's compartment enables the driver to select the most comfortable working position for increased productivity.

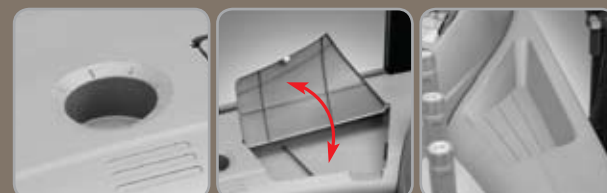


### Self - diagnostic LCD Monitor

The LCD monitor has a back-light system to provide a clear view of the system's operation in all environments. The monitor provides information about operation error, system fault, battery level, hour meter plus other various functions.

### Cup Holder, Console Box & Storage Space

Additional storage spaces are located inside the operating space for operator's convenience.



### Strong Overhead Guard

The safety overhead guard meets EEC and ANSI regulations and protects the operator during hazardous work.



### Operator's Compartment

A large and safe cushion pad is positioned for operator's safety and comfort.



### Non Slip Floor Mat

A heavy, vibration dampening, non-slip floor mat reduces operator fatigue and allows for increased productivity.



### Break Pedal

Smoother breaking is assured by the balanced design of the pedal and maintenance costs are lowered as the cover is easily replaceable.

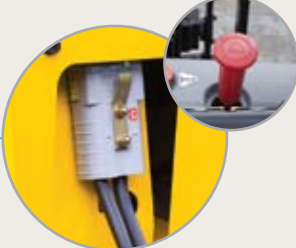


Durability, Easy Maintenance


An ideal arrangement of component parts ensures easy access and convenience for maintenance.



Concentrated Fuse Box for Easy Inspection



Battery Disconnect Lever & Emergency Switch




Disc Brake

Caliper disc brake increases braking force. Maintenance costs are lowered by easy replaceable brake pad.



Reliable MOSFET Type Controller



EPS (Electric Power Steering) System



Easy Battery Replacement



ORFS (O-Ring Face Seal)  
ORFS type hose prevents the leaking of hydraulic oil.

Hydraulic Oil Level Gauge



High Visibility Headlights & Rear Work Light



DC-DC Converter

DC-DC converter, satisfied with UL & CE, prevents from short circuit, overload and reverse polarity.

Mast Specification (10BR-7/13BR-7)

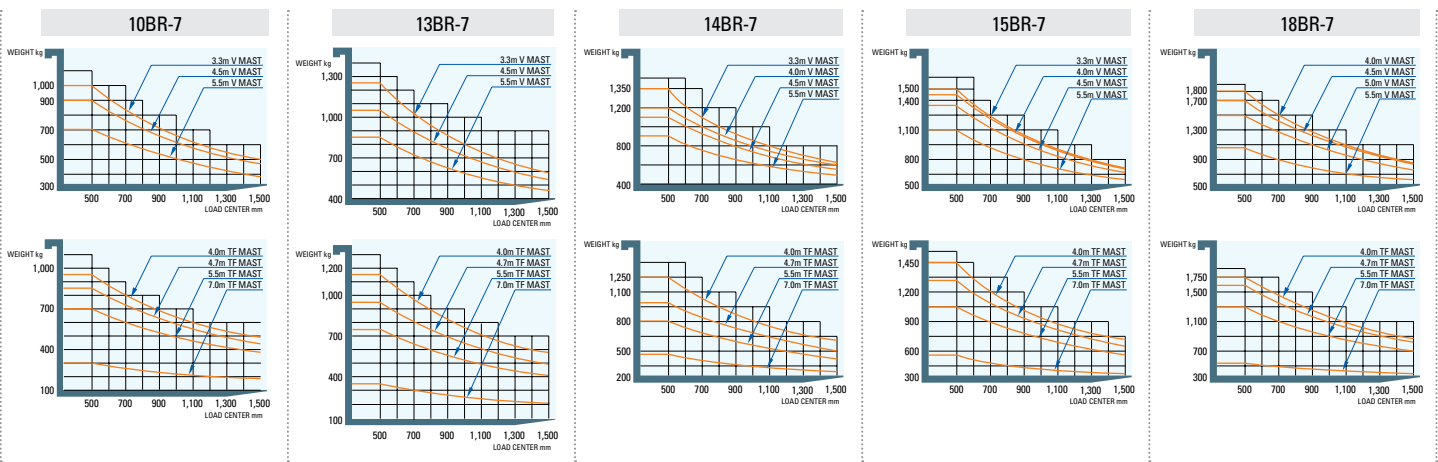
Mast Type		Maximum Fork Height (mm)	Overall Height (Lowered) (mm)	Overall Height(Extended)(mm)		Free Lift Height(mm)		Tilt Angle(deg)		Load Capacity at 500mm LC(kg)				Truck Weight (Unloaded) (kg)	
				With Load Backrest	Without Load Backrest	With Load Backrest	Without Load Backrest	Fwd	Bwd	Without Side Shift		With Side Shift		Truck Weight (Unloaded) (kg)	
				10/13BR-7	10/13BR-7	10/13BR-7	10/13BR-7	10/13BR-7	10/13BR-7	10BR-7	13BR-7	10BR-7	13BR-7	10BR-7	13BR-7
2 / Stage Limited Free Lift	V250	2,525	1,741	3,525	3,035	357	357	3	5	1,000	1,250	1,000	1,250	2,081	2,090
	V270	2,725	1,841	3,725	3,235	357	357	3	5	1,000	1,250	1,000	1,250	2,091	2,100
	*V300	3,025	1,991	4,025	3,535	357	357	3	5	1,000	1,250	1,000	1,250	2,105	2,115
	V330	3,325	2,141	4,325	3,835	357	357	3	5	1,000	1,250	930	1,180	2,121	2,130
	V350	3,525	2,241	4,525	4,035	357	357	3	5	1,000	1,250	930	1,180	2,131	2,140
	V370	3,725	2,341	4,725	4,235	357	357	3	5	1,000	1,200	930	1,130	2,148	2,158
	V400	4,025	2,491	5,025	4,535	357	357	3	5	950	1,150	880	1,080	2,175	2,184
	V450	4,525	2,841	5,525	5,035	357	357	3	5	900	1,050	830	980	2,238	2,247
	V500	5,025	3,091	6,025	5,535	357	357	3	5	800	950	730	880	2,263	2,272
	V550	5,525	3,341	6,525	6,035	357	357	3	5	700	850	630	780	2,288	2,297
3 / Stage Full Free Lift	TF370	3,735	1,806	4,742	4,241	799	1,335	3	5	1,000	1,200	930	1,130	2,256	2,266
	TF400	4,035	1,906	5,042	4,541	899	1,435	3	5	950	1,150	880	1,080	2,277	2,287
	TF430	4,335	2,006	5,342	4,841	999	1,535	3	5	900	1,100	830	1,030	2,298	2,308
	TF450	4,535	2,106	5,542	5,041	1,099	1,635	3	5	900	1,000	830	930	2,316	2,326
	TF470	4,735	2,156	5,742	5,241	1,149	1,685	3	5	850	950	780	880	2,328	2,338
	TF500	5,035	2,256	6,042	5,541	1,249	1,785	3	5	850	900	780	830	2,349	2,359
	TF550	5,535	2,456	6,542	6,041	1,449	1,985	3	5	700	750	630	680	2,411	2,421
	TF600	6,035	2,656	7,042	6,541	1,649	2,185	3	5	600	650	530	580	2,450	2,460
	TF650	6,535	2,856	7,542	7,041	1,849	2,385	3	5	500	550	430	480	2,490	2,500
	TF700	7,035	3,056	8,042	7,541	2,049	2,585	3	5	300	350	230	280	2,519	2,529

Mast Specification (14BR-7/15BR-7/18BR-7)

Mast Type		Maximum Fork Height (mm)	Overall Height (Lowered) (mm)	Overall Height(Extended)(mm)		Free Lift Height(mm)		Tilt Angle(deg)		Load Capacity at 500mm LC(kg)						Truck Weight (Unloaded) (kg)		
				With Load Backrest	Without Load Backrest	With Load Backrest	Without Load Backrest	Fwd	Bwd	Without Side Shift			With Side Shift					
		14/15/18BR-7	14/15/18BR-7	14/15/18BR-7	14/15/18BR-7	14/15/18BR-7	14/15/18BR-7	14/15/18BR-7	14/15/18BR-7	14BR-7	15BR-7	18BR-7	14BR-7	15BR-7	18BR-7	14BR-7	15BR-7	18BR-7
2 / Stage Limited Free Lift	V250	2,525	1,741	3,525	3,035	357	357	3	5	1,350	1,500	1,800	1,350	1,500	1,800	2,167	2,285	2,309
	V270	2,725	1,841	3,725	3,235	357	357	3	5	1,350	1,500	1,800	1,350	1,500	1,800	2,177	2,295	2,319
	*V300	3,025	1,991	4,025	3,535	357	357	3	5	1,350	1,500	1,800	1,350	1,500	1,800	2,192	2,310	2,334
	V330	3,325	2,141	4,325	3,835	357	357	3	5	1,350	1,500	1,800	1,280	1,430	1,730	2,207	2,325	2,350
	V350	3,525	2,241	4,525	4,035	357	357	3	5	1,300	1,500	1,800	1,230	1,430	1,730	2,217	2,336	2,360
	V370	3,725	2,341	4,725	4,235	357	357	3	5	1,250	1,500	1,800	1,180	1,430	1,730	2,234	2,353	2,377
	V400	4,025	2,491	5,025	4,535	357	357	3	5	1,200	1,450	1,800	1,130	1,380	1,730	2,271	2,389	2,413
	V450	4,525	2,841	5,525	5,035	357	357	3	5	1,100	1,350	1,700	1,030	1,280	1,630	2,333	2,452	2,476
	V500	5,025	3,091	6,025	5,535	357	357	3	5	1,000	1,250	1,500	930	1,180	1,430	2,359	2,477	2,501
	V550	5,525	3,341	6,525	6,035	357	357	3	5	900	1,100	1,050	830	1,030	980	2,384	2,502	2,526
3 / Stage Full Free Lift	TF370	3,735	1,806	4,742	4,241	799	1,335	3	5	1,300	1,500	1,800	1,230	1,430	1,730	2,364	2,482	2,507
	TF400	4,035	1,906	5,042	4,541	899	1,435	3	5	1,250	1,450	1,750	1,180	1,380	1,680	2,385	2,503	2,528
	TF430	4,335	2,006	5,342	4,841	999	1,535	3	5	1,150	1,400	1,700	1,080	1,330	1,630	2,406	2,524	2,549
	TF450	4,535	2,106	5,542	5,041	1,099	1,635	3	5	1,100	1,350	1,650	1,030	1,280	1,580	2,425	2,543	2,567
	TF470	4,735	2,156	5,742	5,241	1,149	1,685	3	5	1,000	1,300	1,600	930	1,230	1,530	2,436	2,554	2,579
	TF500	5,035	2,256	6,042	5,541	1,249	1,785	3	5	950	1,200	1,550	880	1,130	1,480	2,457	2,575	2,600
	TF550	5,535	2,456	6,542	6,041	1,449	1,985	3	5	800	1,050	1,300	730	980	1,230	2,523	2,641	2,665
	TF600	6,035	2,656	7,042	6,541	1,649	2,185	3	5	700	900	1,050	630	830	980	2,561	2,679	2,704
	TF650	6,535	2,856	7,542	7,041	1,849	2,385	3	5	600	750	800	530	680	730	2,601	2,719	2,743
	TF700	7,035	3,056	8,042	7,541	2,049	2,585	3	5	450	550	550	380	480	480	2,630	2,748	2,773

\* STANDARD

Load Capacity



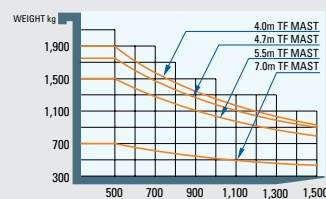
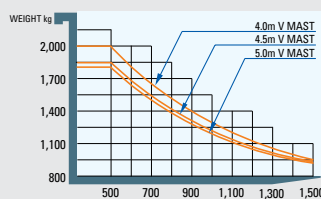
## Mast Specification (20BR-7/25BR-7)

Mast Type		Maximum Fork Height (mm)		Overall Height (Lowered) (mm)		Overall Height(Extended)(mm)				Free Lift Height(mm)				Tilt Angle(deg)		Load Capacity at 500mm LC(kg)				Truck Weight (Unloaded) (kg)	
						With Load Backrest		Without Load Backrest		With Load Backrest		Without Load Backrest		Fwd	Bwd	Without Side Shift		With Side Shift		20BR-7	25BR-7
		20BR-7	25BR-7	20BR-7	25BR-7	20BR-7	25BR-7	20BR-7	25BR-7	20BR-7	25BR-7	20BR-7	25BR-7			20BR-7	25BR-7	20BR-7	25BR-7		
2 / Stage Limited Free Lift	V250	2,505	2,505	1,775	1,775	3,530	3,530	2,970	2,970	415	415	415	415	3	5	2,000	2,500	2,000	2,500	2,624	2,830
	V270	2,705	2,705	1,875	1,875	3,730	3,730	3,170	3,170	415	415	415	415	3	5	2,000	2,500	2,000	2,637	2,843	
	*V300	3,005	3,005	2,025	2,025	4,030	4,030	3,470	3,470	415	415	415	415	3	5	2,000	2,500	2,000	2,500	2,657	2,862
	V330	3,305	3,305	2,175	2,175	4,330	4,330	3,770	3,770	415	415	415	415	3	5	2,000	2,500	1,920	2,420	2,676	2,881
	V350	3,505	3,505	2,275	2,275	4,530	4,530	3,970	3,970	415	415	415	415	3	5	2,000	2,500	1,920	2,420	2,688	2,894
	V370	3,705	3,705	2,425	2,425	4,730	4,730	3,910	3,910	415	415	415	415	3	5	2,000	2,500	1,920	2,420	2,707	2,913
	V400	4,005	4,005	2,575	2,575	5,030	5,030	4,470	4,470	415	415	415	415	3	5	2,000	2,500	1,920	2,420	2,740	2,946
	V430	4,305	4,305	2,725	2,725	5,330	5,330	4,770	4,770	415	415	415	415	3	5	1,950	2,400	1,870	2,320	2,789	2,995
	V450	4,505	4,505	2,875	2,875	5,530	5,530	4,970	4,970	415	415	415	415	3	5	1,850	2,350	1,770	2,270	2,816	3,022
	V470	4,705	4,705	2,975	2,975	5,730	5,730	5,170	5,170	415	415	415	415	3	5	1,850	2,300	1,770	2,220	2,828	3,034
3 / Stage Full Free Lift	V500	5,005	5,005	3,125	3,125	6,030	6,030	5,470	5,470	415	415	415	415	3	5	1,800	2,250	1,720	2,170	2,847	3,053
	TF370	3,705	3,705	1,825	1,825	4,730	4,730	4,358	4,358	800	800	1,172	1,172	3	5	2,000	2,500	1,920	2,420	2,956	3,162
	TF400	4,005	4,005	1,925	1,925	5,030	5,030	4,658	4,658	900	900	1,272	1,272	3	5	1,900	2,450	1,820	2,370	2,977	3,182
	TF430	4,305	4,305	2,025	2,025	5,330	5,330	4,958	4,958	1,000	1,000	1,372	1,372	3	5	1,850	2,350	1,770	2,270	2,997	3,203
	TF450	4,505	4,505	2,125	2,125	5,530	5,530	5,158	5,158	1,100	1,100	1,472	1,472	3	5	1,800	2,350	1,720	2,270	3,015	3,221
	TF470	4,705	4,705	2,175	2,175	5,730	5,730	5,358	5,358	1,150	1,150	1,522	1,522	3	5	1,750	2,300	1,670	2,220	3,026	3,231
	TF500	5,005	5,005	2,275	2,275	6,030	6,030	5,658	5,658	1,250	1,250	1,622	1,622	3	5	1,700	2,200	1,620	2,120	3,045	3,251
	TF550	5,505	5,505	2,475	2,475	6,530	6,530	6,158	6,158	1,450	1,450	1,822	1,822	3	5	1,500	2,050	1,420	1,970	3,126	3,332
	TF600	6,005	6,005	2,675	2,675	7,030	7,030	6,658	6,658	1,650	1,650	2,022	2,022	3	5	1,300	1,950	1,220	1,870	3,165	3,371
	TF650	6,505	6,505	2,875	2,875	7,530	7,530	7,158	7,158	1,850	1,850	2,222	2,222	3	5	1,150	1,450	1,070	1,370	3,205	3,411
	TF700	7,005	7,005	3,075	3,075	8,030	8,030	7,658	7,658	2,050	2,050	2,422	2,422	3	5	700	1,050	620	970	3,243	3,449
	TF750	-	7,505	-	3,225	-	8,530	-	8,158	-	2,200	-	2,572	3	5	350	600	270	520	3,495	3,495

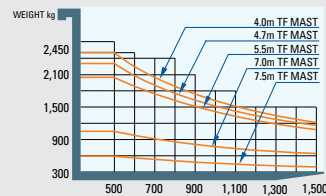
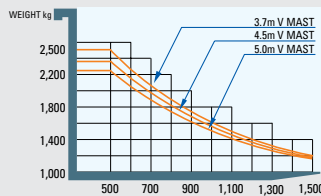
\* STANDARD

## Load Capacity

## 20BR-7



## 25BR-7



## Optional Items

## • MAST

(V-Mast)

10/13/14/15/18BR-7 : V250, V270, V330, V350, V370, V400, V450, V500, V550

20/25BR-7 : V250, V270, V330, V350, V370, V400, V430, V450, V470, V500

(TF-Mast)

10/13/14/15/18/20BR-7 : TF370, TF400, TF430, TF450, TF470, TF500, TF550, TF600, TF650, TF700

25BR-7 : TF370, TF400, TF430, TF450, TF470, TF500, TF550, TF600, TF650, TF700, TF750

## • FORK (mm)

10/13/14/15/18BR-7 : 750 / 850 / 1,050 / 1,200 / 1,350 / 1,500  
20/25BR-7 : 900 / 1,000 / 1,200 / 1,350 / 1,500 / 1,650 / 1,800

## • TIRE

10/13/14/15/18BR-7

OPTION1 : All Urethane

OPTION2 : All Rubber

Non-marking

20/25BR-7

OPTION1 : All Urethane

Non-marking

## • Side Shift

• Steering : Reverse

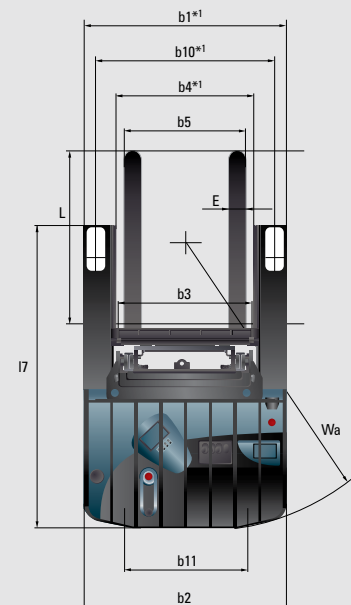
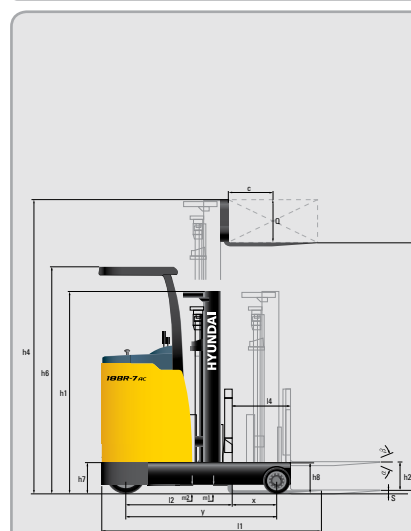
• MCV : 4-SPOOL

• Lever Arrang : A,R,T,L

• Beacon Lamp (Color : Amber / Red / Blue)

• COLD STORAGE

## Dimension



## Specification

## ■ Identification

1.1	Manufacturer	HYUNDAI	HYUNDAI	HYUNDAI	HYUNDAI	HYUNDAI	HYUNDAI	HYUNDAI
1.2	Manufacturer's type designation	10BR-7	13BR-7	14BR-7	15BR-7	18BR-7	20BR-7	25BR-7
1.3	Drive: electric (battery or mains), diesel, petrol, fuel gas, manual	electric	electric	electric	electric	electric	electric	electric
1.4	Type of operation: hand, pedestrian, standing, seated, order-picker	standing	standing	standing	standing	standing	standing	standing
1.5	Load capacity / rated load	Q (t)	1	1.25	1.35	1.5	1.8	2
1.6	Load center distance	c(mm)	500	500	500	500	500	500
1.8	Load distance, center of load wheel to fork face	x(mm)	150	185	275	305	490	417
1.9	Wheelbase	y(mm)	1,115	1,150	1,250	1,315	1,500	1,500

## ■ Weights

2.1	Service weight (Inc. battery)	kg	2,159	2,204	2,220	2,385	2,407	2,678
2.3	Axle loading, Fork retracted, Unloaded (Load end / Drive end)	kg	793 / 1,366	785 / 1,419	802 / 1,418	842 / 1,543	762 / 1,645	929 / 1,749
2.4	Axle loading, Fork extended, Loaded (Load end / Drive end)	kg	2,588 / 571	2,973 / 481	3,106 / 463	3,341 / 544	3,650 / 558	4,159 / 519
2.5	Axle loading, Fork retracted, Loaded (Load end / Drive end)	kg	2,107 / 1,052	2,378 / 1,076	2,395 / 1,175	2,564 / 1,321	2,574 / 1,633	3,040 / 1,639

## ■ Wheels, Chassis

3.1	Tires: solid rubber, superelastic, pneumatic, polyurethane (Load/Drive/Caster)	P-Ure/Rub/Rub	P-Ure/Rub/Rub	P-Ure/Rub/Rub	P-Ure/Rub/Rub	P-Ure/Rub/Rub	P-Ure/Rub/Rub	P-Ure/Rub/Rub
3.2	Tires size, Load (Φ x width)	Φ254 x 100	Φ254 x 100	Φ254 x 100	Φ254 x 100	Φ254 x 100	Φ267 x 114	Φ267 x 114
3.3	Tires size, Drive (Φ x width)	Φ305 x 127	Φ305 x 127	Φ305 x 145	Φ305 x 145	Φ305 x 145	Φ382 x 142	Φ382 x 142
3.4	Tires size, Caster (Φ x width)	Φ178 x 73	Φ178 x 73	Φ178 x 73	Φ178 x 73	Φ178 x 73	Φ204 x 76	Φ204 x 76
3.5	Wheels number : load x drive (driven wheel) x caster	2 x 1 x 2	2 x 1 x 2	2 x 1 x 2	2 x 1 x 2	2 x 1 x 2	2 x 1 x 2	2 x 1 x 2
3.6	Track width, Load end	b10*(mm)	970	970	970	970	1,060	1,060
3.7	Track width, Drive end	b11(mm)	613	613	613	613	689	689

## ■ Basic Dimensions

4.1	Tilt angle, Mast/ fork carriage ( forward / backward )	degrees	3/ 5	3/ 5	3/ 5	3/ 5	3/ 5	3/ 5	3/ 5
4.2	Lowered mast height	h1 (mm)	1,991	1,991	1,991	1,991	1,991	2,025	2,025
4.3	Free lift	h2 (mm)	357	357	357	357	357	415	415
4.4	Lift height	h3 (mm)	3,000	3,000	3,000	3,000	3,000	3,000	3,000
4.5	Extended mast height	h4 (mm)	4,025	4,025	4,025	4,025	4,025	4,030	4,030
4.7	Overhead load guard (cab) height	h6 (mm)	2,260	2,260	2,260	2,260	2,260	2,296	2,296
4.8	Step height	h7 (mm)	324	324	324	324	324	345	345
4.19	Overall length (Reach In, With Fork)	l1 (mm)	2,110	2,110	2,120	2,155	2,155	2,373	2,373
4.20	Length to face of forks (Reach In)	l2 (mm)	1,210	1,210	1,220	1,255	1,255	1,323	1,323
4.21	Overall width (Load end / Drive end)	b1*/b2 (mm)	1,070 / 1,070	1,070 / 1,070	1,070 / 1,070	1,070 / 1,070	1,070 / 1,070	1,200 / 1,200	1,200 / 1,200
4.22	Fork dimensions (hook type)	s/e/(mm)	35x100x900	35x100x900	35x100x900	35x100x900	35x100x900	45x100x1,050	45x100x1,050
4.23	Fork carriage ISO 2328, class / type A,B		II, A	II, A	II, A	II, A	II, A	II, A	II, A
4.24	Fork-carriage width	b3 (mm)	1,019	1,019	1,019	1,019	1,019	1,092	1,092
4.25	Overall fork width	b5 (mm)	734	734	734	734	734	722	722
4.26	Distance between support arms / loading surface	b4*1 (mm)	773	773	771	771	771	837	837
4.28	Reach distance	l4 (mm)	330	365	450	480	665	607	807
4.31	Ground clearance, loaded, under mast	m1(mm)	106	106	106	106	106	130	130
4.32	Ground clearance, centre of wheelbase	m2(mm)	85	85	70	70	70	77	77
4.33	Aisle width for pallets 1,000 x 1,200 crossways	Ast(mm)	2,665	2,672	2,686	2,723	2,762	2,827	2,897
4.34	Aisle width for pallets 800 x 1,200 lengthways	Ast(mm)	2,749	2,751	2,753	2,785	2,790	2,869	2,892
4.35	Turning radius	Wa(mm)	1,425	1,460	1,545	1,605	1,775	1,790	1,985
4.37	Length across wheel arms	l7(mm)	1,495	1,495	1,630	1,630	1,880	1,880	2,080